

MONTHLY MEMBERSHIP PROGRESS REPORT

LOCATION NIGERIA

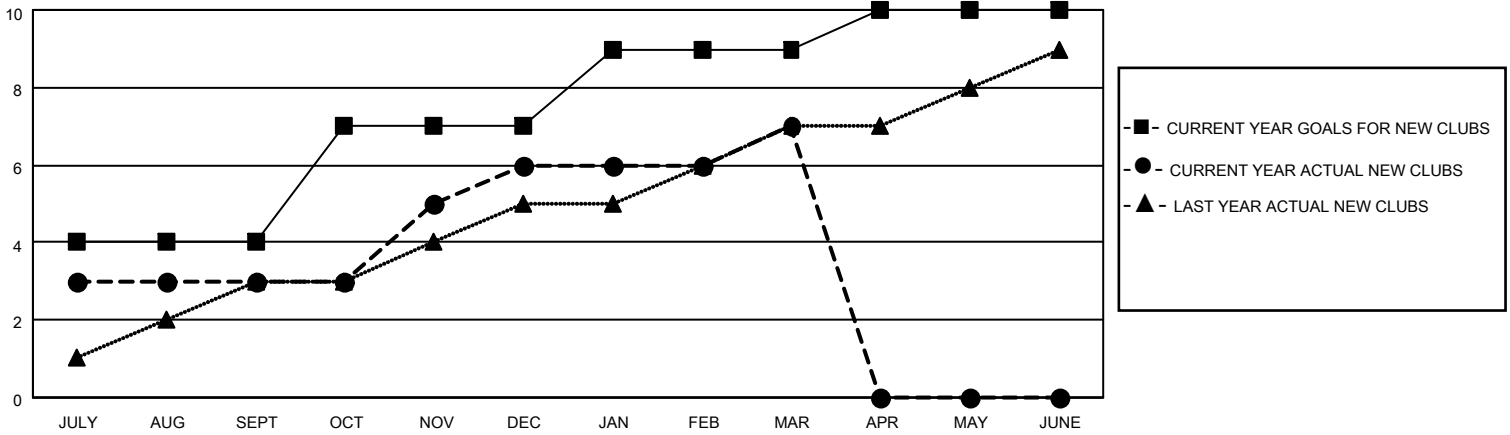
District 404 B2

Results as of: 3/31/2023

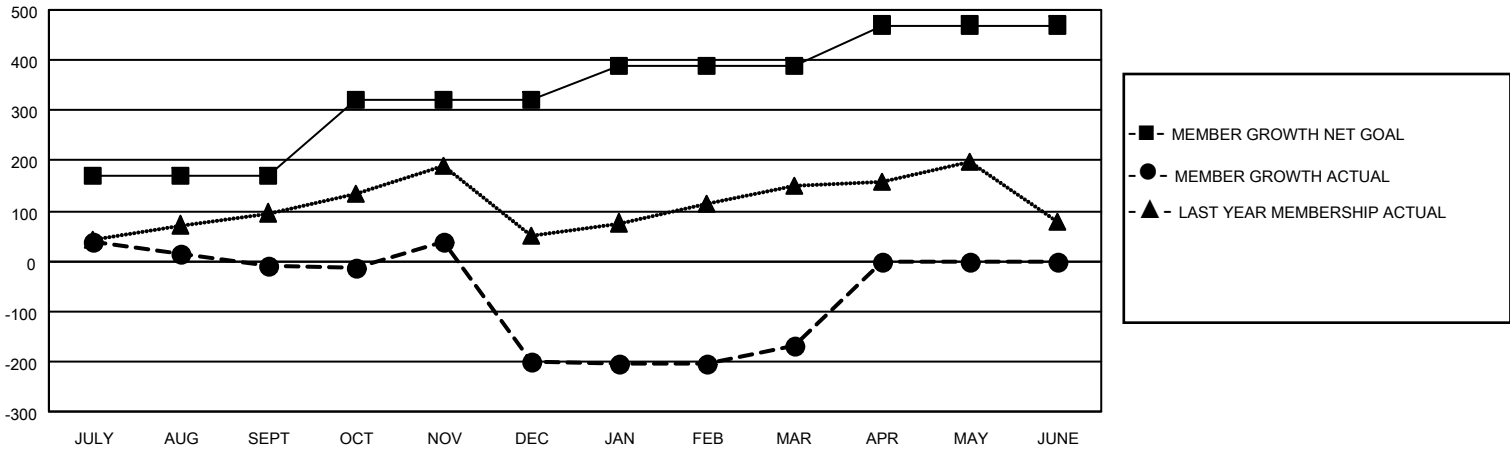
Clubs			
RESULTS FOR 2022-2023			
QUARTER	NEW CLUB GOAL	NEW CLUBS	DROPPED CLUBS
JULY/AUG/SEPT	4	3	3
OCT/NOV/DEC	3	3	10
JAN/FEB/MAR	2	1	1
APR/MAY/JUNE	1	0	0

Members			
RESULTS FOR 2022-2023			
QUARTER	MEMBER GROWTH NET GOAL	MEMBER GROWTH ACTUAL	DROPPED MEMBERS ACTUAL (including transfers)
JULY/AUG/SEPT	170	122	119
OCT/NOV/DEC	150	166	346
JAN/FEB/MAR	70	152	91
APR/MAY/JUNE	80	0	0

GOALS AND ACTUAL NEW CLUBS CUMULATIVE



GOALS AND ACTUAL MEMBERS CUMULATIVE



DROPPED CLUBS: 14

62 CLUBS OF 92 ADDED 1 OR MORE NEW MEMBERS

GENDER DISTRIBUTION

DROPPED MEMBERS

DECEASED	7
CLUB CANCELLED	241
OTHER	308
TOTAL	556

MALE	1,208 (56.06%)
FEMALE	947 (43.94%)
NON BINARY	0 (0.00%)
PREFER NOT TO ANSWER	0 (0.00%)

[CLICK HERE FOR CUMULATIVE MEMBERSHIP DATA](#)

TOTAL FAMILY UNIT MEMBERS	203
FAMILY MEMBERS PAYING HALF DUES	111